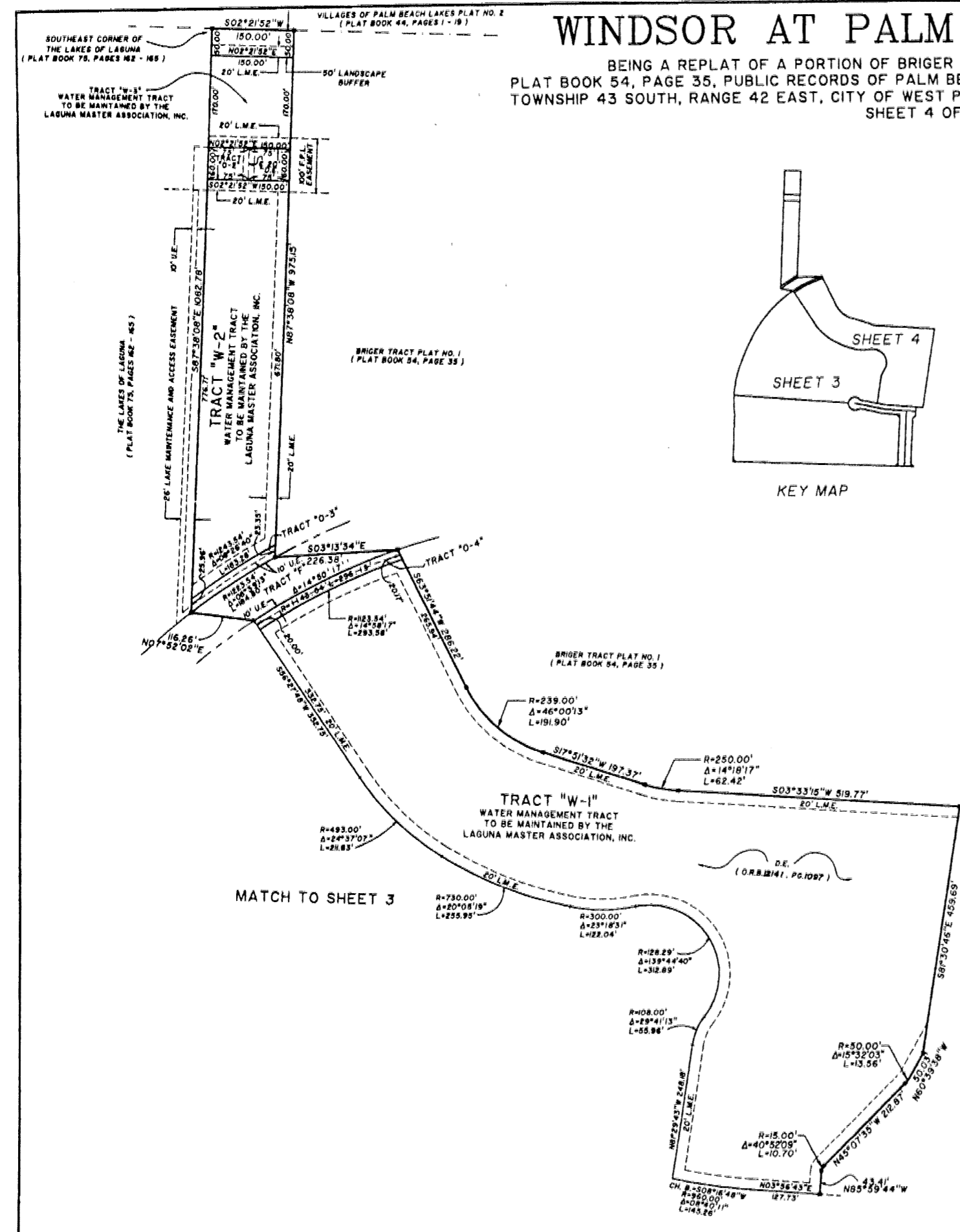
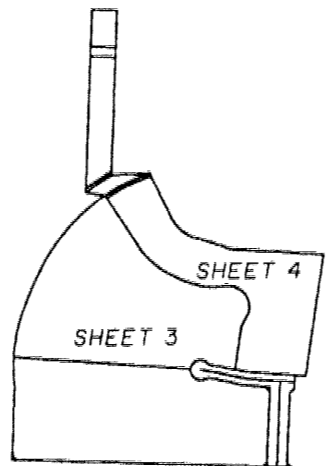
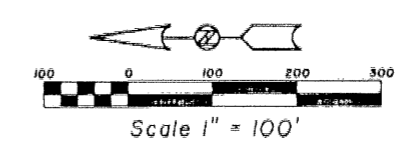


WINDSOR AT PALM BEACH LAKES

BEING A REPLAT OF A PORTION OF BRIGER TRACT PLAT NO. 1, AS RECORDED
 PLAT BOOK 54, PAGE 35, PUBLIC RECORDS OF PALM BEACH COUNTY, FLORIDA, LYING IN SECTION 12,
 TOWNSHIP 43 SOUTH, RANGE 42 EAST, CITY OF WEST PALM BEACH, PALM BEACH COUNTY, FLORIDA.
 SHEET 4 OF 4

120

STATE OF FLORIDA
 COUNTY OF PALM BEACH
 THIS PLAT WAS FILED FOR RECORD AT _____
 ON _____ M. TIME _____ DAY OF _____ 2009
 AND WAS RECORDED IN PLAT BOOK NO. _____
 ON PAGE _____
 DOROTHY H. WILKIN, CLERK OF THE CIRCUIT COURT
 BY _____ D.C.



	Landmark Surveying & Mapping Inc. L.B. NO. 4338 1850 Forest Hill Boulevard Ph. (561) 433-5405 Suite 100 W.P.B. Florida
	WINDSOR AT PALM BEACH LAKES